



Loeffel Meat Shoppe
38th & Fair St, UNL East Campus
Lincoln, NE 68583
(402) 472-2308



Main Street Meats
806 W 1st Street
Ogallala, NE 69153
(308) 284-1177



Marky's Meat Market
2943 Red Barn Drive East
Gering, NE 69341
(402) 992-1594



R & M Meats
2606 S 13th St
Norfolk, NE 68701
(402) 992-1594



Rick's Meats
2929 N 204th St
Elkhorn, NE 68022
(402) 359-1800

INSTRUCTIONS:

Using the Beef Passport is easy! Simply visit participating locations, order any beef item, and receive a check-in for the appropriate location listed on the passport. Each check-in qualifies as an entry for the grand prize give-a-way. Once you are finished collecting check-ins, complete the entry form and mail the entire passport back to the Nebraska Beef Council. Passports must be received by the deadline date to qualify for prizes.

ORDER BEEF. EARN POINTS. WIN PRIZES!

PLEASE NOTE: Hours of operation may vary. Takeout, drive thru and delivery may be available in some locations. Please contact participating locations directly for details before visiting.

RULES:

1. One passport per person. Each person must present their own passport at the participating location to receive a check-in. Combining passports for prize eligibility is not allowed.
2. A beef purchase must be made to receive a check-in.
3. Only one check-in may be obtained per location. (get the digital passport for more prize opportunities)
4. Check-ins may be collected at participating locations May 1 through September 30, 2025
5. Winners will be announced by October 31, 2025

BEEF PASSPORT

ENTRY FORM

Please complete this form and return your entire passport to the Nebraska Beef Council. **Postmark by October 5, 2025**

Name _____

Date of Birth _____

Address _____

City _____

State _____ Zip _____

Phone _____

Email _____

MAIL TO:

Nebraska Beef Council
P.O. Box 2108
Kearney, NE 68848



PRIZES:

Top Prize: \$250 beef bundle. Each check-in collected = one entry to the grand prize. A second beef bundle winner will be drawn from check-ins at meat processor locations.

Collecting at least 5 check-ins qualifies for a re-usable BIWFD grocery tote bag. (100 winners)

Collecting at least 10 check-ins qualifies for a BIWFD Signature Spice Rub & meat thermometer. (100 winners)

Passports with 30+ check-ins will be listed on the Nebraska Beef Passport Hall of Fame and will receive a bonus prize.

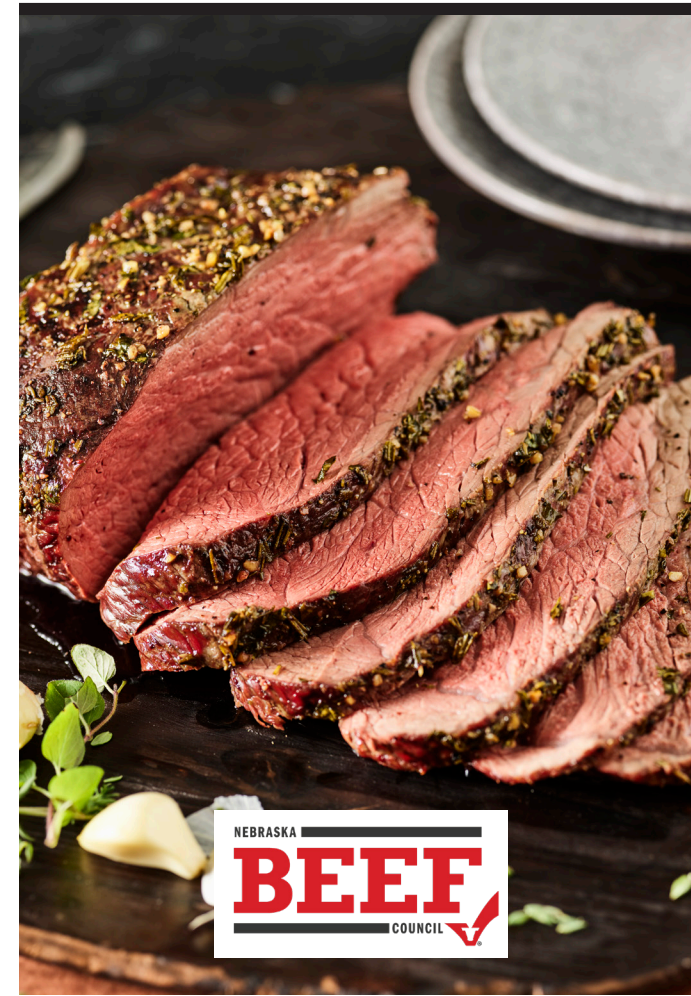
VISIT US ONLINE:

For a full list of prizes, rules, and restrictions visit
www.GoodLifeGreatSteaks.org



ABOUT THE NEBRASKA BEEF COUNCIL

The Nebraska Beef Council is a non-profit organization served by a nine-member board of directors consisting of Nebraska cattle farmers & ranchers. The volunteers oversee the \$1 per head Beef Checkoff and programs implemented by the Nebraska Beef Council.



RESTAURANTS

Bob's Bar & Grill

5205 Main St
Martinsburg, NE 68770
(402) 945-2995

Bordertown Steakhouse

100 Main Street
Kilgore, NE 69216
(402) 966-3881

Branding Iron Grill & Pub

406 E US-275
Tilden, NE 68781
(402) 368-5392

Bronco's Hamburgers

1123 S 120th Street
or 4540 Leavenworth Street
Omaha, NE 68144
(402) 551-7477

Buck's Bar & Grill

27849 W Center Rd
Venice, NE 68069
(402) 515-6212

Capone's Bar & Grill

2520 Halligan Dr
North Platte, NE 69101
(308) 534-4340

Carl's Tavern

116 South 15th Street
Ord, NE 68862
(308) 730-8116

Charlie's Pub

524 Main Street
Milligan, NE 68406
(402) 366-3418

Cunningham's on the Lake

610 Talmadge St Suite A
Kearney, NE 68845
(308) 237-5122

Dinker's Bar & Grill

2368 S 29th St
Omaha, NE 68105
(402) 342-9742

Double L Country Store & Café

2213 Hwy 71
Harrisburg, NE 69345
(308) 241-2266

Front Street Steakhouse

519 East 1st Street
Ogallala, NE 69153
(308) 284-6000

HF Crave

4800 Holdrege St Suite 100
Lincoln, NE 68504
(402) 480-7399

Highway 2 Depot

201 South Lincoln Ave
Mullen, NE 69152
(308) 546-2284

Julie's Hay Town Grill

119 N Main Street
Hay Springs, NE 69347
(308) 638-7100

Little Ted's Pub & Grill

416 Central Ave
Nebraska City, NE 68410
(402) 713-0333

Outlaw Steakhouse & Saloon

153 4th St
Garland, NE 68360
(402) 588-2663

Papa Moon

3109 Ave B
Scottsbluff, NE 69361
(308) 633-6880

Rowdy's Steakhouse

321 F Street
Fairbury, NE 68352
(402) 729-5083

Royal Bar & Grill

3040 US Hwy 20
Royal, NE 68773
(402) 242-0900

Ruhlman's Steakhouse

603 US Hwy 6
Ashland, NE 68003
(402) 780-8887

Taste of Texas

112 S 1st St
McCook, NE 69001
(308) 345-1611

The Cellar Sports Bar & Grill

3901 2nd Ave
Kearney, NE 68847
(308) 251-5458

The Loading Chute

114 N 3rd Street
Hampton, NE 68843
(308) 725-3003

The Palace Lounge

125 W 4th Ave
Red Cloud, NE 68970
(402) 746-9951

The Single Barrel

141 N 9th St
Lincoln, NE 68508
(402) 904-4631

The Speakeasy

72993 S Road
Holdrege, NE 68949
(308) 995-4757

Three 21 Tavern

112 E 5th St
Lexington, NE 68850
(308) 746-7181

Thunder Road Sports Bar

1607 South Locust St, Ste B Grand
Island, NE 68801
(308) 395-3889

Two Bills Steakhouse

211 Iowa Street
Clearwater, NE 68726
(402) 458-2525

MEAT PROCESSORS

American Butchers

809 O Street
Beaver City, NE 68926
(308) 261-2110

Aurora Meat Block

1001 13th Street
Aurora, NE 68818
(402) 694-2365

Blair Meat Market

312 N 16th St
Blair, NE 68008
(402) 426-3300

Belschner Custom Meats

110 S Main Street
Amherst, NE 68812
(308) 826-2621

Den's Country Meats

62573 Highway 4
Table Rock, NE 68447
(402) 839-4635

Dundy County Processors

70388 Hwy 61,
Benkelman, NE 69021
(308) 423-2633

Faltin Meat Market

215 Center St
Howels, NE 68641
(402) 986-1550

Gentert Pack

17904 Jackson St
Holstein, NE 68950
(402) 756-5611

Heartland Provisions

409 Commercial St
Diller, NE 68342
(402) 793-5820

Husker Meats

740 N Old Hwy 7
Ainsworth, NE 69210
(402) 382-3663

Karpisek's Market

119 W 3rd St
Wilber, NE 68465
(402) 821-2320

McLean Beef

(also a restaurant)
3208 S Lincoln Ave
York, NE 68467
(402) 362-0055

Midwest Meat Company

1150 33 Road
Minden, NE 68959
(308) 304-3842

M-K Meats

458 H Street
Unadilla, NE 68454
(402) 828-4400

North Bend Locker

627 N Main Street
North Bend, NE 68649
(402) 652-8212

Ord Locker

81380 Hwy 11
Ord, NE 68862
(308) 728-5816

Pickrell Locker & Smokehouse

217 Austin Street
Pickrell, NE 68422
(402) 673-3480

Shamrock Locker

500 S 4th Street
O'Neill, NE 68763
(402) 336-2333

Wahoo Locker

205 W. 5th Street
Wahoo, NE 68008
(402) 277-0574

MEAT SHOPS

B.I.G. Meats

4867 S 137th St
Omaha, NE 68137
(402) 895-9525

Buresh Meats

1339 38th Rd
David City, NE 68632
(402) 954-8593

Cornhusker Beef Company

815 Central Ave
Nebraska City, NE 68410
(402) 274-1701

Ellsworth Crossing

26902 W Center Rd
Waterloo, NE 68069
(402) 301-5027

IMPORTANT: Hours of operation may vary!

Please call ahead to confirm open hours before traveling to destinations.

** Merchants, apply check-ins by initialling the space next to your business**